



Irrigation Pump Sets



POWERED BY LISTER PETTER ENGINES

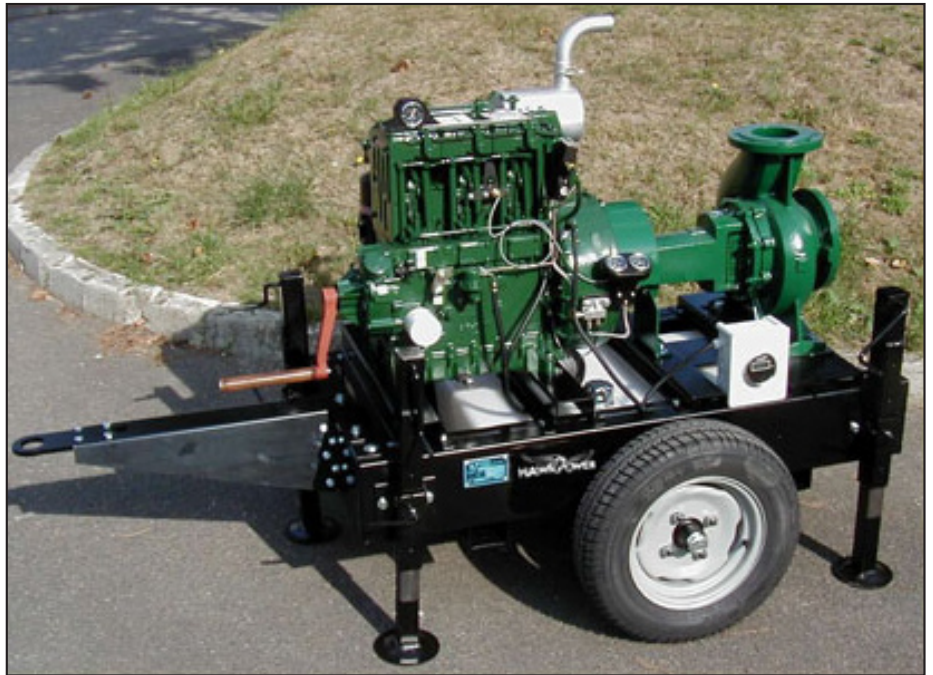
Engines: A6, A13, A20

Pumps: ETANORM 50–200, 80–160, 100–200, 125–200, 150–200

(60–600 m³/hr)

Air-cooled pump sets for operating conditions up to 52°C

Each pump set is configured to ensure optimum performance, taking into consideration the height of lift and flow rate, length of the delivery line, and the diameters of the suction and delivery lines.



Special Attributes

- ✓ Lister Petter air-cooled diesel engine
- ✓ suitable for ambient temperatures up to 52°C
- ✓ suitable for tropical conditions
- ✓ continuous operation for up to 24 hours a day
- ✓ handle start
- ✓ stationary or mobile configuration
- ✓ 70 litre integral fuel tank in the base (A13/A20 only)
- ✓ 13.5 litre engine-mounted fuel tank (A6 only)

Optional Items

- 12 Volt electric start
- fuel suction probe for use with a remote tank
- off-road trailer with 2-wheeled axle, towbar and positioning stands (A13/A20 only)
- site trolley kit (A6 only)

Capabilities

See overleaf.

Irrigation Pump Sets Technical Data Sheet

Technical Data																
Output (m ³ /h)				Total head (m)												
Pump	Engine	r/min	Power (kW)	6	8	9	10	11	12	14	23	25	27	29	30	
ETANORM 50–200	A6	2000	7.3								71	64	58	43	40	
ETANORM 80–160		1600	5.9		132	113	94	61								
ETANORM 100–200	A13	1800	18.1				217		195	170						
ETANORM 125–200		1500	11.0		250		165		100							
		1600	11.7		320		280		180	125						
ETANORM 150–200		1500	11.0	400	300		220									
ETANORM 125–200	A20	1800	20.2				365		315	250						
ETANORM 150–200		1500	16.8	460	390		305		160							
		1700	19.0		475		400		290							
		1800	20.2		560		505		446	370						

Performances shown are subject to modification dependent on the accessories used with the pump set. Engine outputs are continuous ISO 3046 ratings under NTP conditions. The engine selection is made with at least a 20% differential between the absorbed power of the pump and the engine output.

A comprehensive range of options allows you to select a specification that matches your requirements. Please ask your Directech distributor. (See panel below left.)

Distributor's Address

Directech (Pty) Ltd

Directech Industrial Park,
corner Homestead & Orleans Roads,
Kya-sand, South Africa

PO Box 771174, Fontainebleau, 2032, South Africa

Tel: +27 11 708 2202 **Fax:** +27 11 708 2217

Website: www.hawkpowergenerators.com

Directech have made efforts to ensure that the information in this data sheet is accurate but reserve the right to amend specifications and information without notice and without obligation or liability.